

**Anti-S6K2 Antibody**  
**Rabbit polyclonal antibody to S6K2**  
**Catalog # AP60628****Specification**

---

**Anti-S6K2 Antibody - Product Information**

Application	WB, IHC
Primary Accession	<a href="#">Q9UBS0</a>
Reactivity	Human, Rat
Host	Rabbit
Clonality	Polyclonal
Calculated MW	53455

**Anti-S6K2 Antibody - Additional Information****Gene ID** 6199**Other Names**

STK14B; Ribosomal protein S6 kinase beta-2; S6K-beta-2; S6K2; 70 kDa ribosomal protein S6 kinase 2; P70S6K2; p70-S6K 2; S6 kinase-related kinase; SRK; Serine/threonine-protein kinase 14B; p70 ribosomal S6 kinase beta; S6K-beta; p70 S6 kinase beta; p70 S6K-beta; p70 S6KB; p70-beta

**Target/Specificity**

Recognizes endogenous levels of S6K2 protein.

**Dilution**

WB~~WB (1/500 - 1/1000), IH (1/100 - 1/200)

IHC~~1:100~500

**Format**

Liquid in 0.42% Potassium phosphate, 0.87% Sodium chloride, pH 7.3, 30% glycerol, and 0.09% (W/V) sodium azide.

**Storage**

Store at -20 °C. Stable for 12 months from date of receipt

**Anti-S6K2 Antibody - Protein Information****Name** RPS6KB2**Synonyms** STK14B**Function**

Phosphorylates specifically ribosomal protein S6 (PubMed: <a href="http://www.uniprot.org/citations/29750193" target="\_blank">29750193</a>). Seems to act downstream of mTOR signaling in response to growth factors and nutrients to promote cell proliferation, cell growth and cell cycle progression in an alternative pathway regulated by MEAK7 (PubMed: <a href="http://www.uniprot.org/citations/29750193" target="\_blank">29750193</a>).

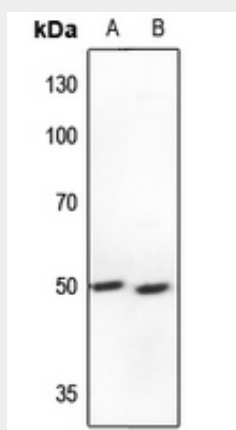
**Cellular Location**

Cytoplasm. Nucleus.

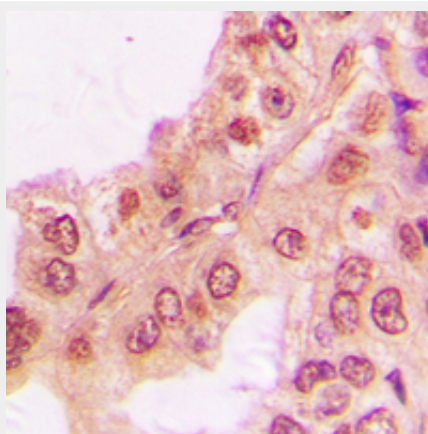
**Anti-S6K2 Antibody - Protocols**

Provided below are standard protocols that you may find useful for product applications.

- [Western Blot](#)
- [Blocking Peptides](#)
- [Dot Blot](#)
- [Immunohistochemistry](#)
- [Immunofluorescence](#)
- [Immunoprecipitation](#)
- [Flow Cytometry](#)
- [Cell Culture](#)

**Anti-S6K2 Antibody - Images**

Western blot analysis of S6K2 expression in HEK293T (A), rat liver (B) whole cell lysates.



Immunohistochemical analysis of S6K2 staining in human lung cancer formalin fixed paraffin embedded tissue section. The section was pre-treated using heat mediated antigen retrieval with sodium citrate buffer (pH 6.0). The section was then incubated with the antibody at room temperature and detected using an HRP conjugated compact polymer system. DAB was used as the chromogen. The section was then counterstained with haematoxylin and mounted with DPX.

**Anti-S6K2 Antibody - Background**

KLH-conjugated synthetic peptide encompassing a sequence within the C-term region of human S6K2. The exact sequence is proprietary.